

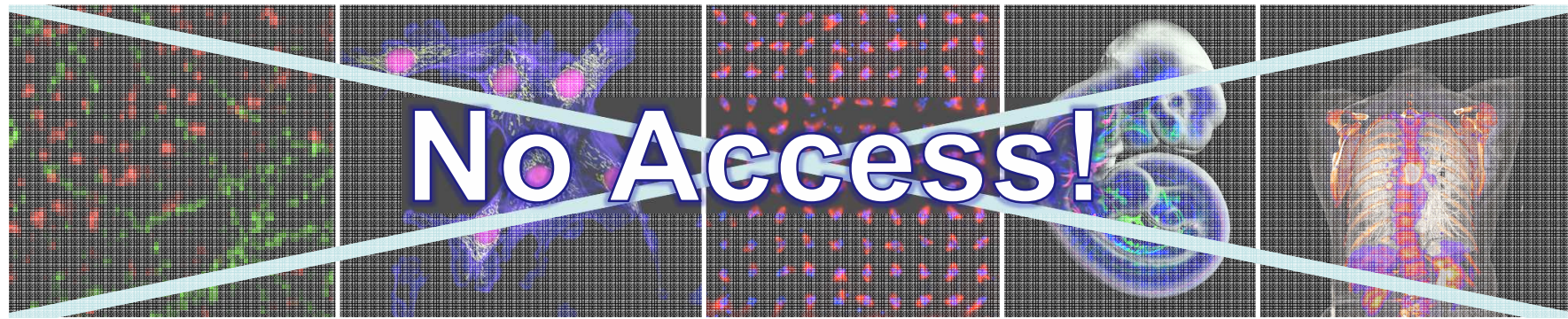
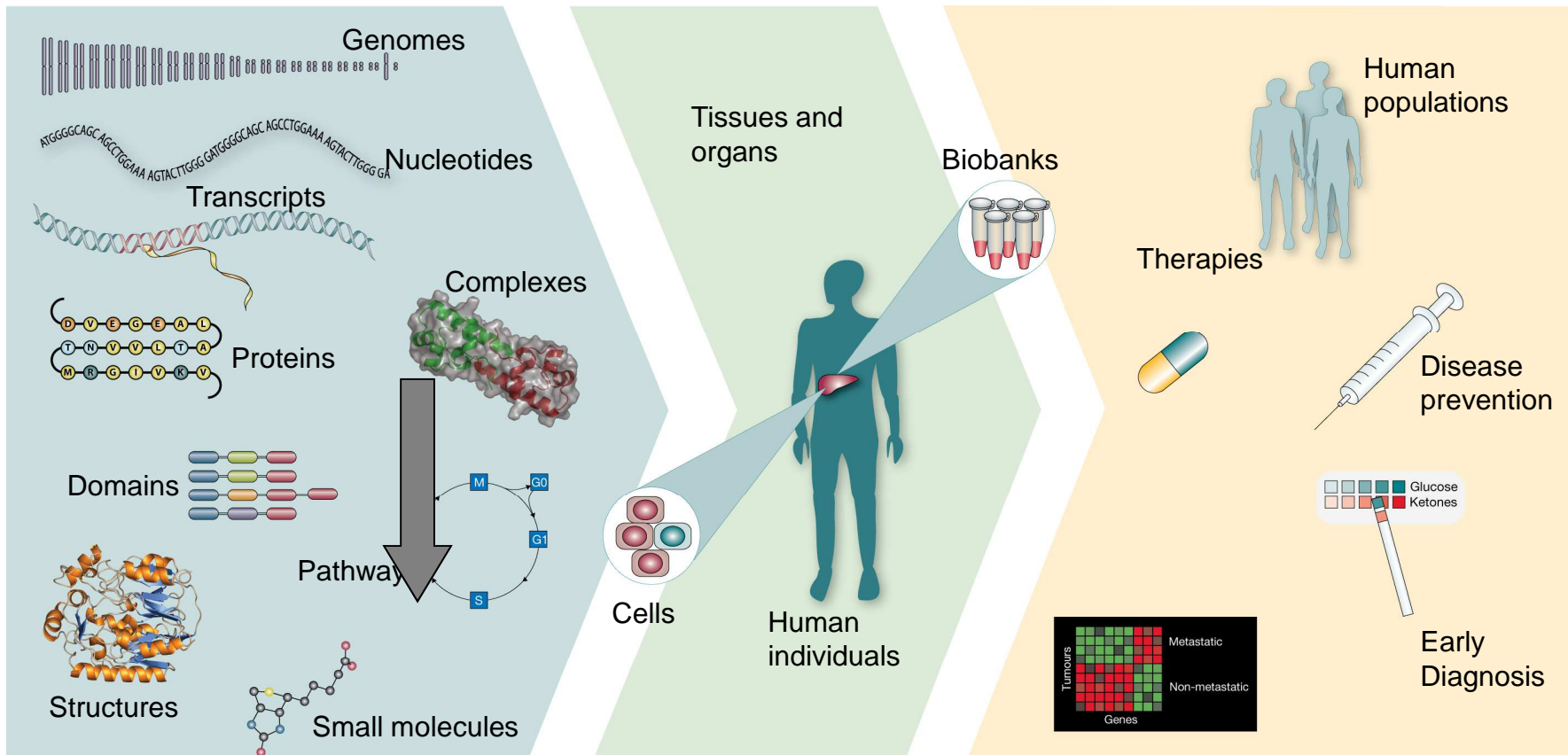
Euro-Biolmaging

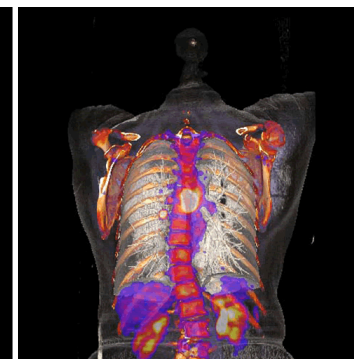
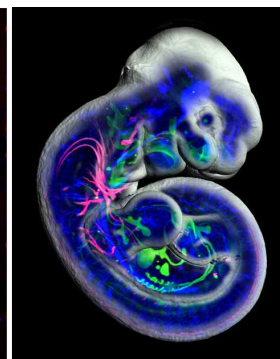
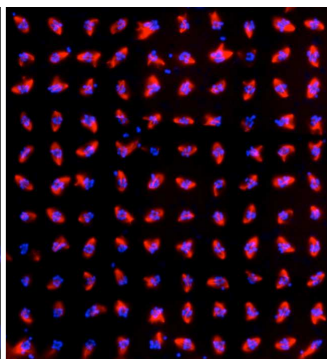
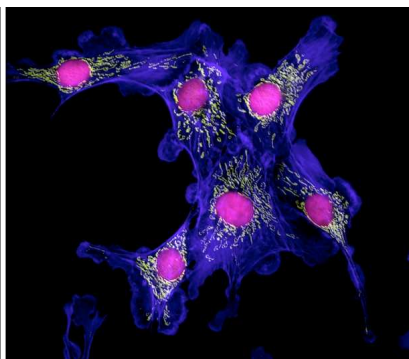
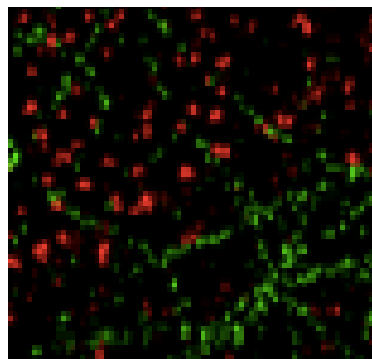
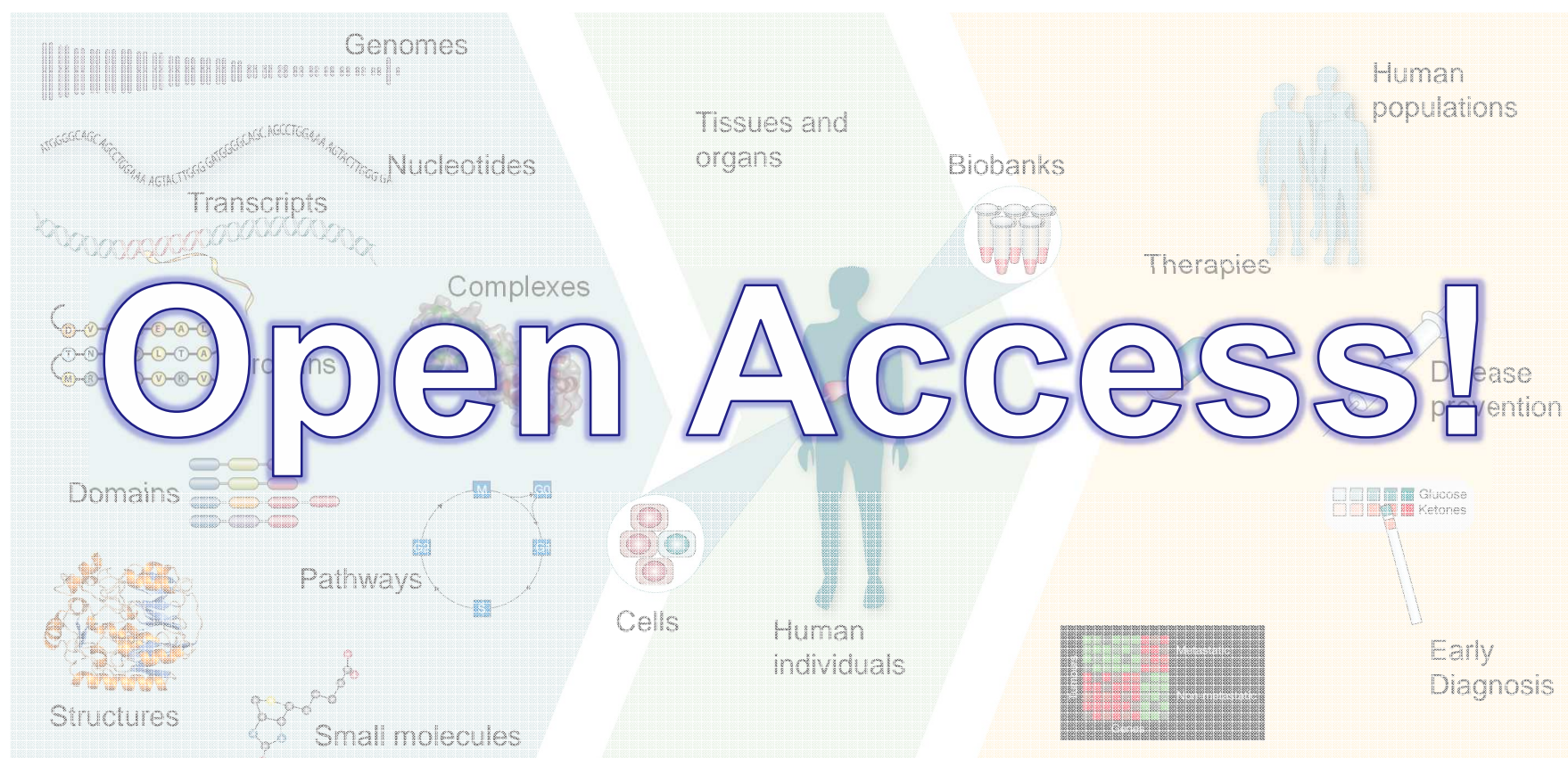
**European Research Infrastructure for Imaging
Technologies in Biological and Biomedical Sciences**

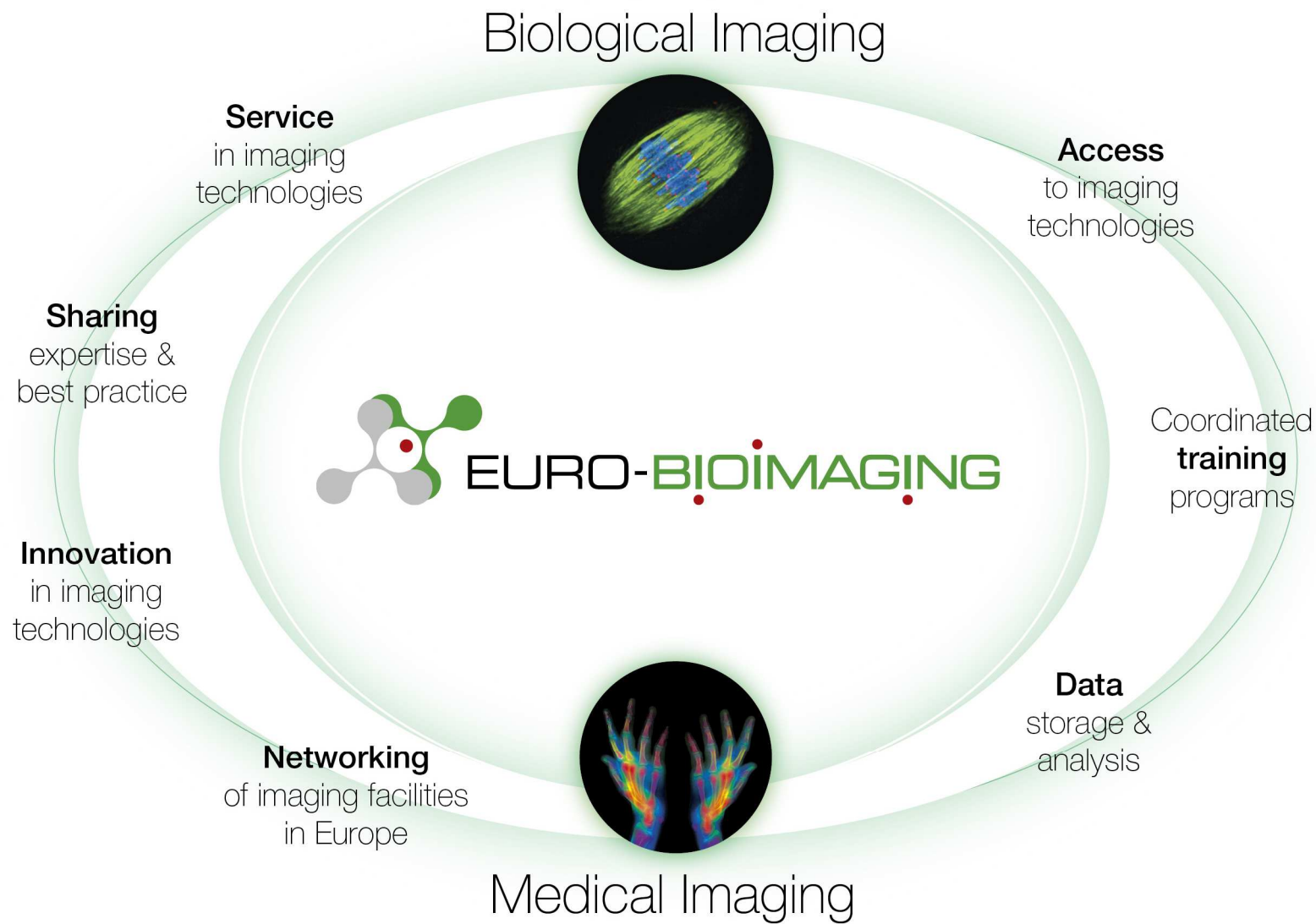
AARC/CORBEL workshop for BMS AAI

Pasi Kankaanpää, PhD
Administrative Director, Turku Biolmaging
Project Manager, Euro-Biolmaging

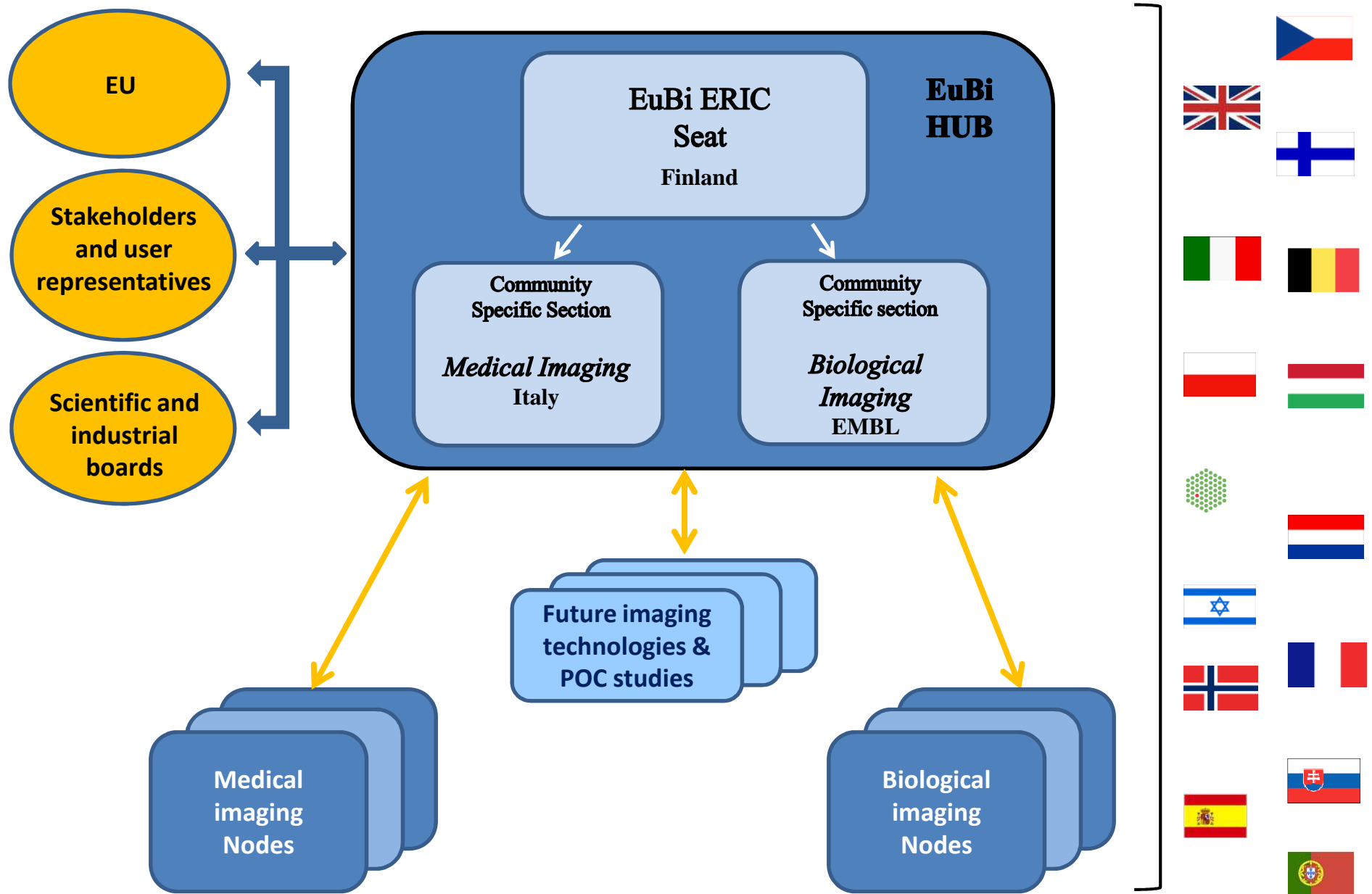
A Revolution in Bioimaging Technologies






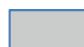


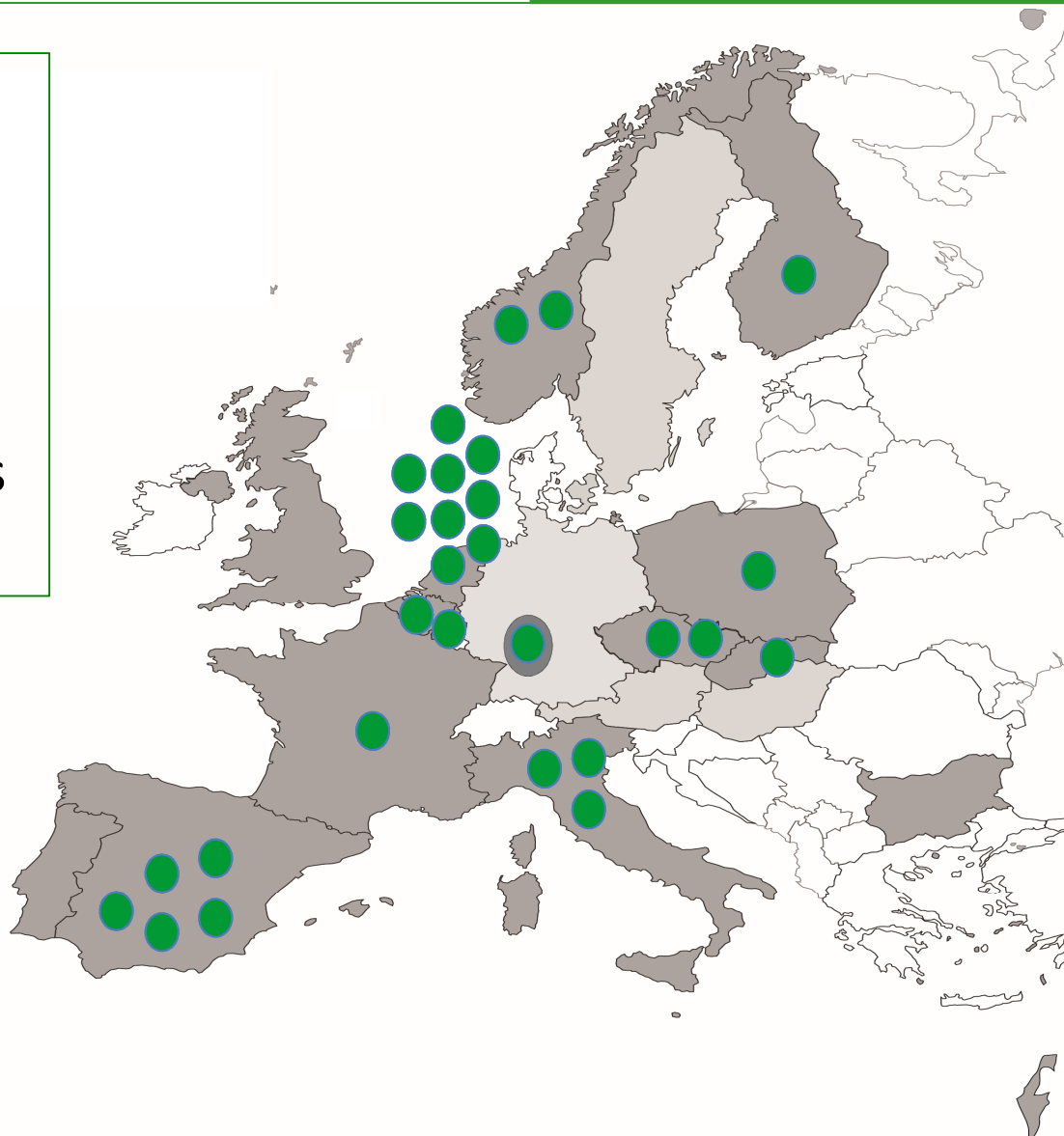
The Structure of the Euro-bioimaging RI

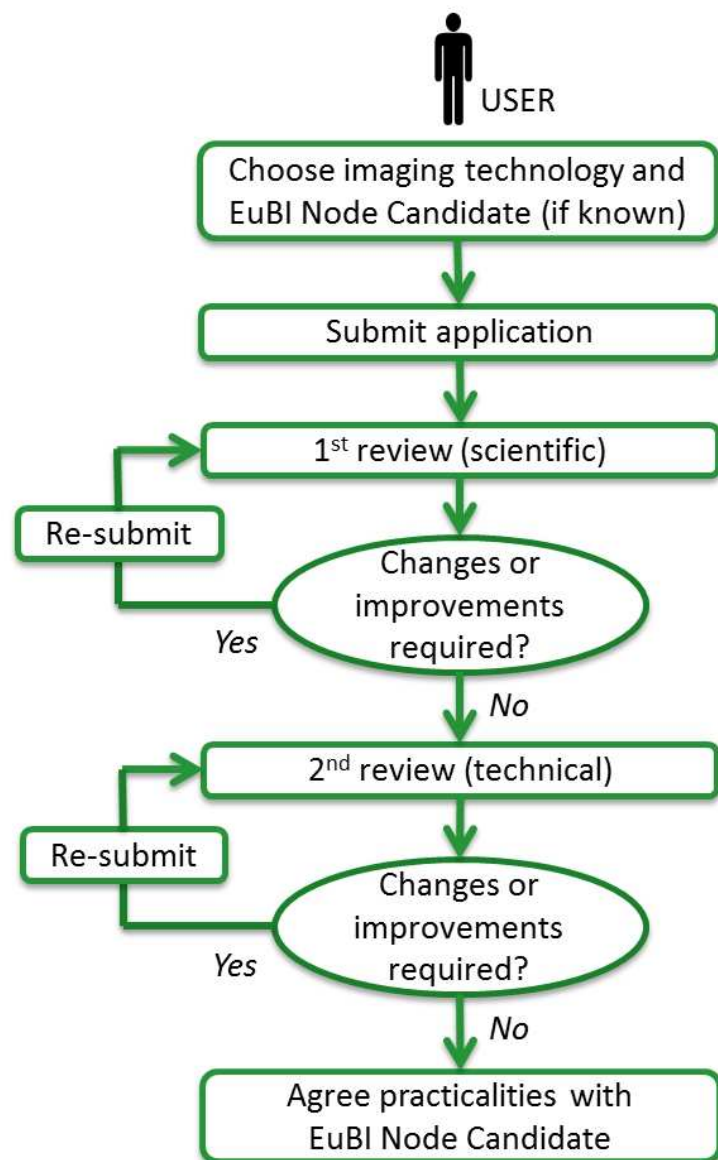


Start of Interim
Operation in
May 2016

At 28 Nodes in 10
European countries
and EMBL

 EuBI Members
 EuBI Observers





Features:

- Submission and review process of access applications
- Access portal to image data repository, processing tools and cloud services
- Management of training activities
- Management of quality control
- Multi-level online communication platform
- Tools for identifying and assessing new imaging technologies
- Tools for real-time data collection of all EuBI activities

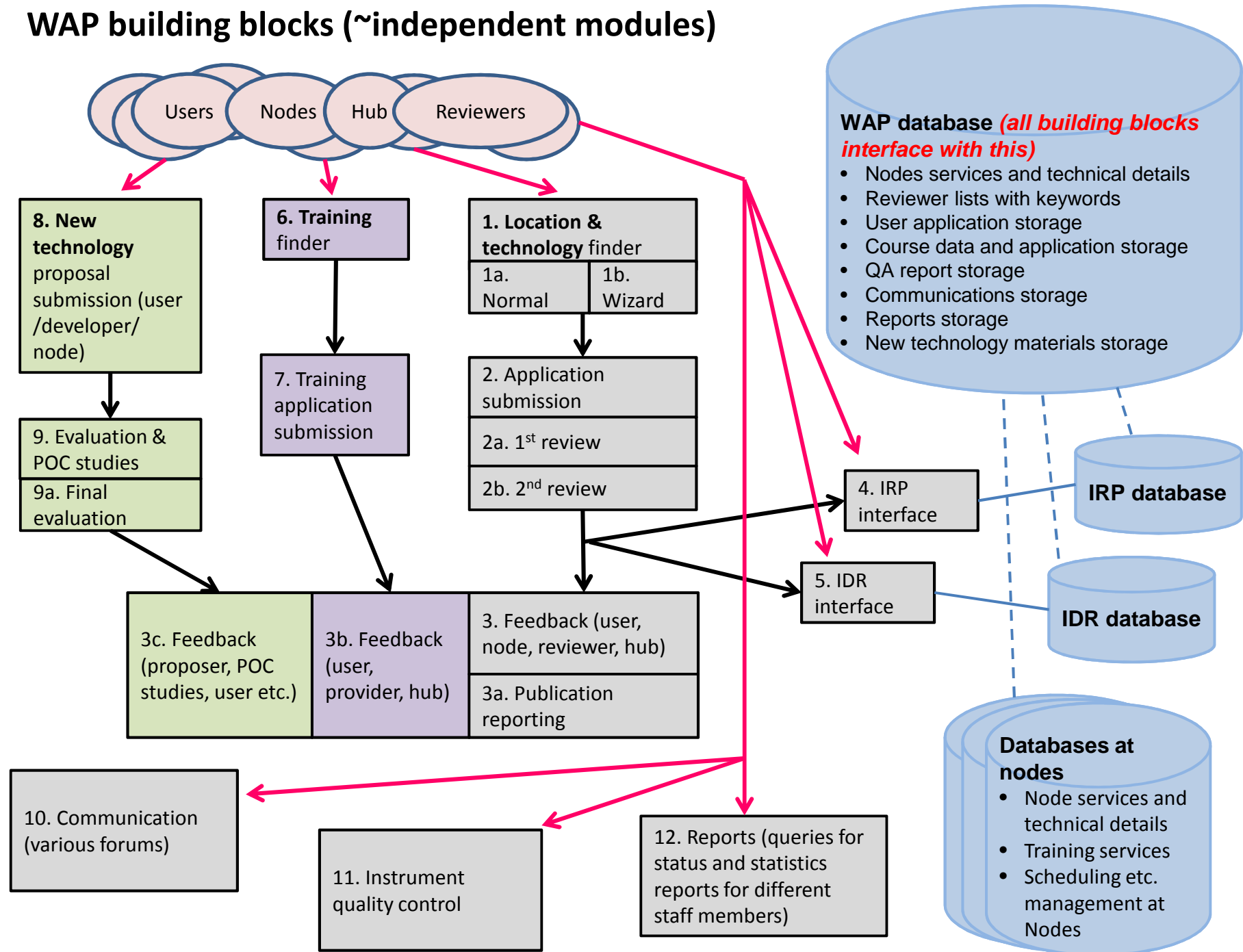
The WAP...

...is a dynamic web service, a single entry point to all EuBI online services - not a web site and not just a “list of links”

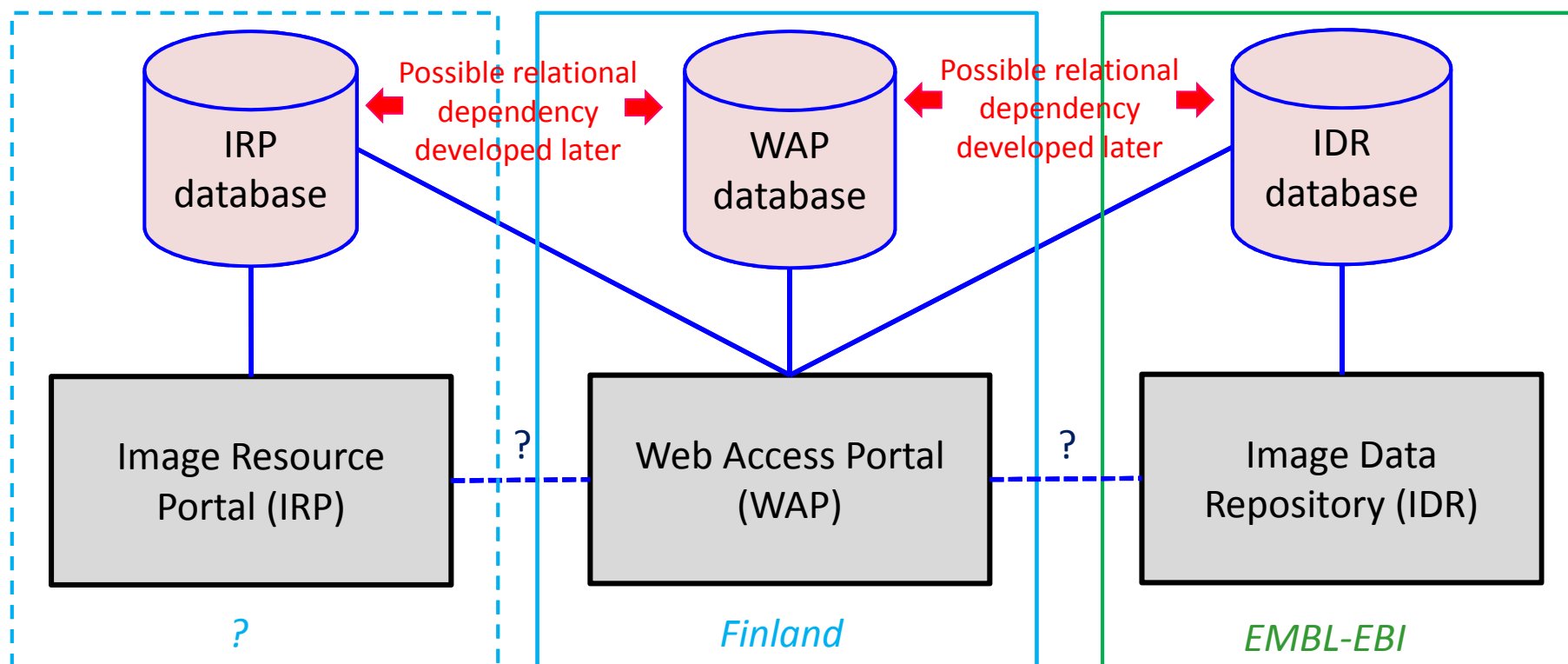
...handles all levels of the user access procedure

... is an access portal also to the image data repository, image data processing tools and workflows, and cloud services

WAP building blocks (~independent modules)

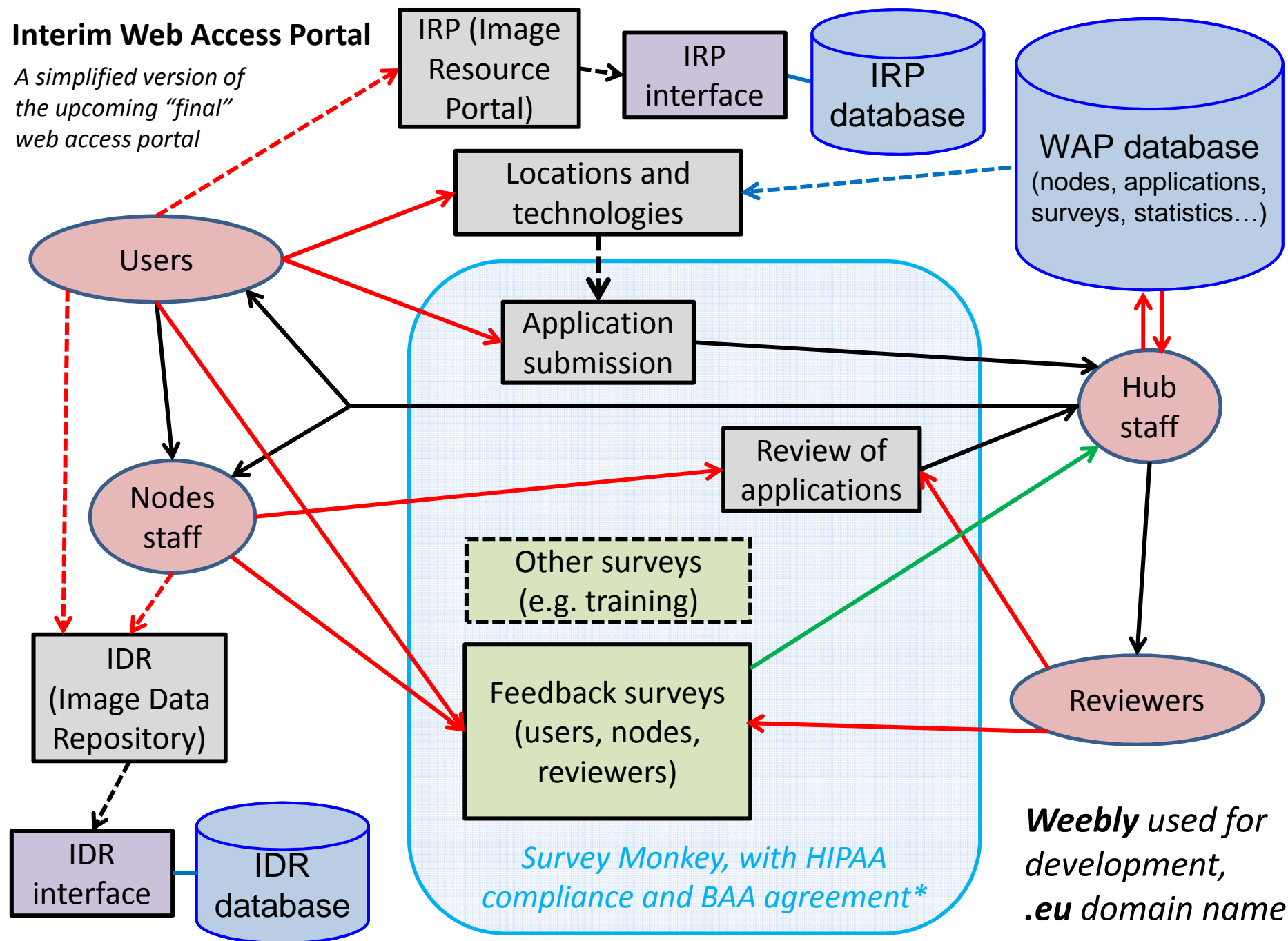


- IDR (Image Data Repository) and IRP (Image Resource Portal) databases can contain tags for both EuBI (e.g. project number, node, technology) and each other (e.g. software components, workflows, data type)
- WAP can query these tags, and IDR and IRP can return direct links to the data/resource in question
- Collaboration between EuBI, **Global BioImaging** and **NEUBIAS** (Network of European bioimage analysts) very important, because of overlaps and synergies



Interim Web Access Portal

A simplified version of the upcoming "final" web access portal



**Health Insurance Portability and Accountability Act, for Protected Health Information, with a Business Associate Agreement*

- WAP relational database(s) will be built with Microsoft SQL server, containing tables such as Nodes, Locations, Technologies, Reviewers, Applications, and many more
- These tables will include vocabulary compatible with ontologies used e.g. in Image Data Repository (IDR) and Image Resource Portal (IRP)
- Front-end WAP application will be developed using C# on .NET platform, compatible with Microsoft SQL server
- Reporting services are planned to be developed using SQL Server Reporting Services (SSRS)

Database sample screen shot:

Object Explorer

Connect

TBI-ATHRESH (SQL Serv

Databases

System Databases

InterimWAP_temp

Database Diagrams

Tables

System Tables

FileTables

dbo.After_Visi

dbo.APP_STA

dbo.Applicatio

dbo.Node

dbo.Node_Co

dbo.Node_Lo

dbo.Node_Tec

dbo.Reviewer

dbo.Scientific

dbo.Technical

dbo.Technolo

dbo.User_deta

Views

Synonyms

Programmability

Service Broker

Storage

Security

SQLQuery1.sql - TB...athresh-admin (56)*

```
SELECT A.[Hosting IB], A.[Node Name], B.[Contact Person],B.Email,C.[Offered Technology],D.Tech_Name
FROM Node A
INNER JOIN Node_Contact B ON A.[Node ID]=B.[Node ID]
INNER JOIN Node_Technology C ON A.[Node ID]=C.[Node ID]
INNER JOIN Technology_list D ON D.Abbreviation=C.[Equipment/Device]
WHERE A.[Interim operation]='YES'
```

100 %

Results Messages

	Hosting IB	Node Name	Contact Person	Email	Offered Technology	Tech_Name
152	Italy	Molecular Imaging Italian Node	Silvio Aime	mmmi-node@unito.it	Molecular Imaging	Optical Imaging
153	Italy	Phase Contrast Imaging Flagship Node Trieste	Dr. Giuliana TROMBA	giuliana.tromba@elettra.eu	Medical Imaging	Phase Contrast Imaging
154	Netherlands	Challenges Framework Flagship Node	Prof. Dr. W. J. Niessen	w.niessen@erasmusmc.nl	Challenges Framework	Challenges Framework
155	Netherlands	Correlative Light Microscopy Dutch Flagship Node	Judith Klumperman	j.klumperman@umcutrecht.nl	CLEM	Correlative Light Electron Microscopy
156	Netherlands	Erasmus MC OIC - Advanced Light Microscopy Rotterdam Node	Prof. Dr. A. B. Houtsmuller	a.houtsmuller@erasmusmc.nl	ALM	Laser Scanning Confocal Microscopy
157	Netherlands	Erasmus MC OIC - Advanced Light Microscopy Rotterdam Node	Prof. Dr. A. B. Houtsmuller	a.houtsmuller@erasmusmc.nl	ALM	Multiphoton Microscopy Systems
158	Netherlands	Erasmus MC OIC - Advanced Light Microscopy Rotterdam Node	Prof. Dr. A. B. Houtsmuller	a.houtsmuller@erasmusmc.nl	ALM	Spinning Disc Confocal Microscopy
159	Netherlands	Erasmus MC OIC - Advanced Light Microscopy Rotterdam Node	Prof. Dr. A. B. Houtsmuller	a.houtsmuller@erasmusmc.nl	ALM	Total Internal Reflection Fluorescence mi
160	Netherlands	Erasmus MC OIC - Advanced Light Microscopy Rotterdam Node	Prof. Dr. A. B. Houtsmuller	a.houtsmuller@erasmusmc.nl	Functional Imaging	Fluorescence correlation spectroscopy
161	Netherlands	Erasmus MC OIC - Advanced Light Microscopy Rotterdam Node	Prof. Dr. A. B. Houtsmuller	a.houtsmuller@erasmusmc.nl	Functional Imaging	Fluorescence recovery after photobleachi
162	Netherlands	Erasmus MC OIC - Advanced Light Microscopy Rotterdam Node	Prof. Dr. A. B. Houtsmuller	a.houtsmuller@erasmusmc.nl	Functional Imaging	Fluorescence resonance energy transfer
163	Netherlands	Erasmus MC OIC - Advanced Light Microscopy Rotterdam Node	Prof. Dr. A. B. Houtsmuller	a.houtsmuller@erasmusmc.nl	Super Resolution	4Pi microscopy
164	Netherlands	Erasmus MC OIC - Advanced Light Microscopy Rotterdam Node	Prof. Dr. A. B. Houtsmuller	a.houtsmuller@erasmusmc.nl	Super Resolution	Photo activated localization microscopy
165	Netherlands	Erasmus MC OIC - Advanced Light Microscopy Rotterdam Node	Prof. Dr. A. B. Houtsmuller	a.houtsmuller@erasmusmc.nl	Super Resolution	Stochastic optical reconstruction microscop
166	Netherlands	Facility of excellence in imaging - ALM and Molecular imaging Node ...	Marc A.M.J. van Zandvoort	mamj.vanzandvoort@maastri...	ALM	Electron Microscopy
167	Netherlands	Facility of excellence in imaging - ALM and Molecular imaging Node ...	Marc A.M.J. van Zandvoort	mamj.vanzandvoort@maastri...	ALM	Laser Scanning Confocal Microscopy
168	Netherlands	Facility of excellence in imaging - ALM and Molecular imaging Node ...	Marc A.M.J. van Zandvoort	mamj.vanzandvoort@maastri...	ALM	Multiphoton Microscopy Systems
169	Netherlands	Facility of excellence in imaging - ALM and Molecular imaging Node ...	Marc A.M.J. van Zandvoort	mamj.vanzandvoort@maastri...	ALM	Spinning Disc Confocal Microscopy
170	Netherlands	Facility of excellence in imaging - ALM and Molecular imaging Node ...	Marc A.M.J. van Zandvoort	mamj.vanzandvoort@maastri...	CLEM	Correlative Light Electron Microscopy

Query executed successfully.

TBI-ATHRESH (12.0 RTM) | TBI-ATHRESH\athresh-ad... | InterimWAP_temp | 00:00:00 | 258 rows

Ready

Ln 1

Col 1

INS

User access needs

- Users
- Nodes
- External reviewers
- Hub

Users will be both in and outside Europe, from both academia and industry

Identification should be based on personal IDs, not company/institution IDs

Tight development schedule